

# The story OF US

Deciding to extend their Perth home worked out well for this landscape design duo, who finished the climate-sensitive build just before they were three.

STORY *Deborah Grant* | STYLING *Lisa Quinn-Schofield* | PHOTOGRAPHY *Jody D'Arcy*



**LIVING** Ascher, Dylan and new addition Hudson on their Gus 'Margot' sofa from Roxby Lane. Cushions and sheepskin, Empire Homewares. Armadillo&Co rug, Cranmore Home. Glosswood matte lining boards in Charcoal were used on the wall.

**Smart buy:** Globe West 'Ascot' rectangular coffee table in Mocca Ash, \$945, Roxby Lane.

**DETAIL** Well-loved items on a Tribù teak table from Cosh Living. The cutting is Mottlecach eucalyptus. ▶



Everyone needs a starting point for a renovation. For Ascher Smith and Dylan Lindsay, it was their bedroom. "Our old room was so tiny we almost had to crab-walk out the sides of the bed each morning, so our dream was to have an oversized bedroom with high ceilings and a 'floating' fireplace," says Ascher.

The couple, who run a garden design and landscaping business north of Perth, had just finished updating their three-bedroom 1996 house but felt the 110m<sup>2</sup> structure was still too small for future children. So, after three years of planning and one waiting for council approvals, they went up and doubled the floor space, completing the seven-month build in January 2015 - weeks before their first child, Hudson, was born. "Had we only spent six months planning, it may have taken three years to build," says Ascher.

While their home is on one of the busiest roads of the coastal suburb, it's set quite

high on the 307m<sup>2</sup> block. The second floor has given them borrowed views of the valley and beach a kilometre away, as well as the large west-facing balcony they wanted off their bedroom. This area and the upper floor's hallways were mostly suspended out over existing courtyards, so none of the internal space was compromised.

According to Ascher, the bedroom was "almost designed around the new revolving fireplace", an award-winning matte black steel design called the Gyrofocus by Oblica. It pivots a full 360 degrees, bringing warmth inside and out. "This masterpiece is the centrepiece!" she says.

Before ordering the Gyrofocus from France, they visited Oblica's Melbourne showroom to see it in action and stumbled on lighting designer Christopher Boots working in the same building. "We were speechless at the beauty of his Portal lights and immediately bought one to be our 'nightlight' on the bedhead." ▶

**LIVING** Now the upstairs balcony extends over the courtyard, the west-facing room enjoys soft light, not full sun. In the planters are philodendrons, grasses and succulents. Chairs, The Outdoor Furniture Specialists.

## THE PALETTE

**Mustard**  
sofa, main bedroom  
throw & cushions

**Porter's Paints  
Palm Beach  
Black**  
exterior

**Dulux  
Vivid White**  
walls and ceilings  
throughout

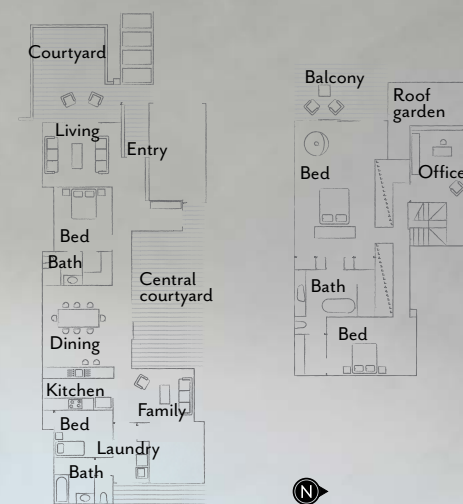
## Colour cred

Ascher describes her tonally sophisticated home as "mid-century modern industrial with a dash of Spanish. I'm obsessed with black and white and clean lines, but need all the timber browns, natural stone colours and greenery to soften," she explains. "Careful detailing allowed the design to transition from traditional to modern quite naturally so there wasn't such a clear distinction between old and new."



**DINING** Dylan had the table made using jarrah from his family's farm in Margaret River. 'Tanner' dining chairs, Barnaby Lane. Artwork by David Spencer. **KITCHEN** Ascher and Dylan hand-poured their concrete benchtop. The cabinetry is blackbutt. Leather stools, Empire Homewares. Pendant lights, Alti Lighting. **ENTRANCE** An HK Living bench seat from Cranmore Home in the glass void near the front door. 'Valleys' cushion from Häwtrey. Basket, Bowerhouse. **Smart buy:** Muuto 'The Dots' ash wood coat hooks, from \$35 each, Living Edge.

## THE LAYOUT



GROUND FLOOR

FIRST FLOOR

## This is the life

Given their business, outdoor space was very important to Ascher and Dylan. "We wanted to create a comfortable home and a professional calling card, a manifestation of our taste and style that would only get better with age," says Ascher, who chose plants that look good year-round. Their life isn't all about work though. There's a swing in the central courtyard for Hudson and plenty of occasions to use the pizza oven Dylan built.



HOUSES H&G

*The kitchen looks out to the central courtyard, with its water feature and pizza oven.*

Alongside the main bedroom, they also specified an ensuite, another bedroom - which has become the nursery - and a large open-plan office for designer Ascher and project manager Dylan.

Great relationships with their architect, Chris Willcox, and builder Marcus Otten of ASL Constructions really paid off as the home has the strong architectural elements and materials they love: black steel, copper, spotted-gum cladding, Ecoply panels (coated in Porter's Paints Palm Beach Black), polished concrete render and travertine pavers.

One 'old' feature everyone was surprised to see maintained was the arched front door, now clad in natural limestone to cover the cream brick. The couple opted to keep its shape and wrought-iron gate. "The arch has so many wonderful memories for us," says Ascher. "It reminds us how far we have come and how much we've achieved with our home."

**Ascher Smith Exterior Styling & Landscaping, Scarborough, WA; 0422 069 310 or aschersmith.com.au.**  
**Willcox & Associates; willcox.com.au.**







**CENTRAL COURTYARD** Stained Ecoply panels rise above the copper-backed green wall of ferns, exotics and succulents. The ornamental grape vine overhead keeps the temperature down in summer. Sofa, Eco Outdoor. 'Strap' chair, Empire Homewares. **FRONT COURTYARD** The travertine pavers are arranged in a French pattern. On the table are *Kalanchoe* succulents. **BEDROOM** Storage hides behind the bedhead, finished with a custom colour by Painted Earth. Fire, Oblica. Light, Christopher Boots. Rug, Designer Rugs. Chairs, Cosh Living. **EXTERIOR** *Lomandra* 'Lime Tuff' covers the green roof and bed along the front wall (rendered with polished concrete). For *Where to Buy*, see page 188.



*'I love getting home and having a glass of pinot while I water the garden.'* Ascher Smith



**KEY PLANTS & TREES**

**FRONT GARDEN**  
*Eremophila* 'Blue Horizon'  
*Myoporum* 'Yareena'  
*Sapium sebiferum*  
(Chinese tallow tree)  
Citrus and cherry guava  
trees (side of house)

**CENTRAL COURTYARD**  
Ornamental grape vine  
Avocado tree  
Mass-planted  
philodendron species  
Ferns



*Paving the way*

The couple laid travertine pavers in both of their external courtyards and the entry walkway. "As a natural stone, it has a timeless character and blends seamlessly with the other materials in our home," says Ascher. "It also stays cool underfoot in summer. We chose tumbled travertine so there's less of a slip factor. You only have to seal it every five years, which is less maintenance. For these reasons – and the fact that travertine's durable, cost-effective and environmentally friendly – we use it in a lot of our gardens." **H&G**